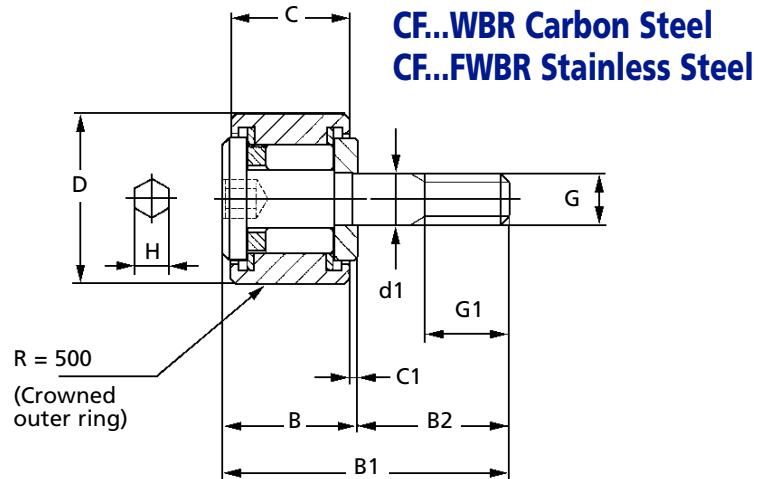


CF-WB
CF-FWB

BEARINGS

Thrust Disc Type Cam Followers with Hexagon Hole Stud Diameter 3 - 5mm



Discounts: 20+ -8.5%

Shield type	Sealed type	Weight (Ref.) g	Mounting Dimension f Min. mm	Max. Tightening Torque Nm	Basic Dynamic Load Rating C N	Basic Static Load Rating Co N	Max. Allowable Load N
CF3WBR	CF3WBUUR	4.3	6.8	0.34	1500	1320	384
CF3FWBR	CF3FWBUUR	4.3	6.8	0.34	1200	813	384
CF4WBR	CF4WBUUR	7.4	8.3	0.78	2070	1590	834
CF4FWBR	CF4FWBUUR	7.4	8.3	0.78	1650	1270	834
CF5WBR	CF5WBUUR	10.3	9.3	1.60	2520	2140	1260
CF5FWBR	CF5FWBUUR	10.3	9.3	1.60	1930	1730	1260

Part Number	d1 (h7) Stud Dia. mm	D	C	G	G1	B max.	B1 max.	B2	C1	H	Price Each 1- 19 Shield type	Sealed type	
CF3WBR	CF3WBUUR	3	10	7	M3 x 0.5	5.0	8	17	9	0.5	2.0	£19.13	£23.01
CF3FWBR	CF3FWBUUR	3	10	7	M3 x 0.5	5.0	8	17	9	0.5	2.0	£39.74	£46.08
CF4WBR	CF4WBUUR	4	12	8	M4 x 0.7	6.0	9	20	11	0.5	2.5	£17.17	£20.41
CF4FWBR	CF4FWBUUR	4	12	8	M4 x 0.7	6.0	9	20	11	0.5	2.5	£35.52	£40.72
CF5WBR	CF5WBUUR	5	13	9	M5 x 0.8	7.5	10	23	13	0.5	3.0	£16.02	£19.27
CF5FWBR	CF5FWBUUR	5	13	9	M5 x 0.8	7.5	10	23	13	0.5	3.0	£33.08	£38.28

+44 (0)1246 455500
+44 (0)1246 455522

ondrives

sales@ondrives.com
www.ondrives.com

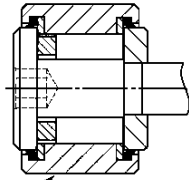
Product information updated 1st April 2011 and subject to change. Please contact Sales for the latest prices and availability.

BEARINGS

CF-WB
CF-FWB

Thrust Disc Type Cam Followers with Hexagon Hole Stud Diameter 3 - 5mm

CF...WBUUR Carbon Steel
CF...FWBUUR Stainless Steel



R = 500
(Crowned outer ring)

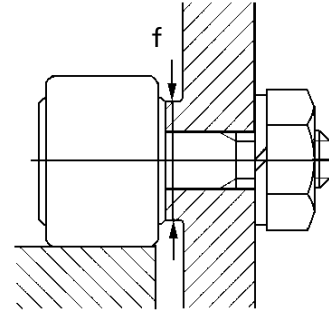


Table 1: Track Capacity

Type: metric series (§§) Cam Followers			
Part No.(§) With Crowned Outer Ring	Track Capacity N	Part No.(§) With Cylindrical Outer Ring	Track Capacity N
CF3R	542	CF3	1360
CF4R	712	CF4	1790
CF5R	794	CF5	2210
-	-	CFS2	220
-	-	CFS2.5	298
-	-	CFS3	485
-	-	CFS4	799
-	-	CFS5	1210
-	-	CFS6	1680

Table 2: Track Capacity Factor

Hardness HRC	Tensile Strength N/mm ²	Track Capacity Factor With Crowned Outer Ring
20	760	0.22
25	840	0.31
30	950	0.45
35	1080	0.65
38	1180	0.85
40	1250	1.00
42	1340	1.23
44	1435	1.52
46	1530	1.85
48	1635	2.27
50	1760	2.80
52	1880	3.46
54	2015	4.21
56	2150	5.13
58	2290	6.26

Track capacity is defined as the load which can be continuously applied on a Cam Follower placed on a steel track surface without causing deformation and indentation (dent) on the track surface. The track capacities shown in Table 1 are applicable when the hardness of the mating track surface differs from HRC40 (Tensile strength 1250N/mm²). When the hardness of the mating track surface differs from HRC40, the track capacity is obtained by multiplying the value with a track capacity factor shown in Table 2.

If lubrication between the outer ring and the mating track surface is insufficient, seizure and/or wear may occur depending on the application. Therefore, it is needed to pay attention to lubrication and surface roughness of the mating track especially in case of high speed rotation such as cam mechanisms.

Allowable Rotational Speed is affected by mounting and operating conditions. The $d_1 \cdot n$ values in general operation under pure radial load are shown below for reference. It is recommended to use 1/10 of the table values in actual applications taking account of axial loads that may be applied.

$d_1 \cdot n$ Values where d_1 = Stud Diameter (mm) and n = Number of Rotations per minute (Rpm)

Max $d_1 \cdot n$ Values With cage Type = 84,000 $d_1 \cdot n$ (with grease lubricant); Full Complement Type = 42,000 $d_1 \cdot n$ (with grease lubricant)

Material

CF...WBR, CF...WBUUR: High Carbon Steel

CF...FWBR, CF...FWBUUR: Stainless Steel

Seals: Synthetic Rubber

Other Info.

Stud designed to fit H7 housing.

Notes

(§) Only representative types are shown in the table, but applicable to all types.