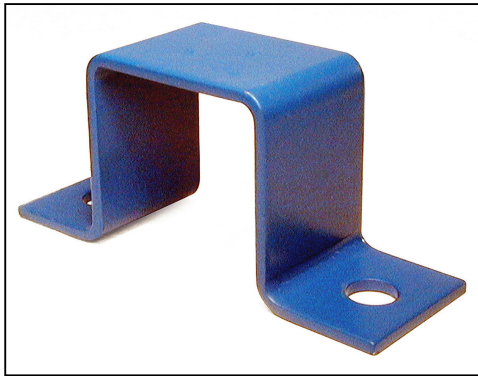


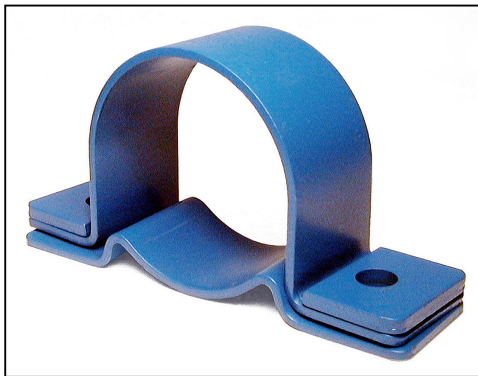
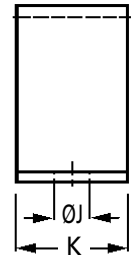
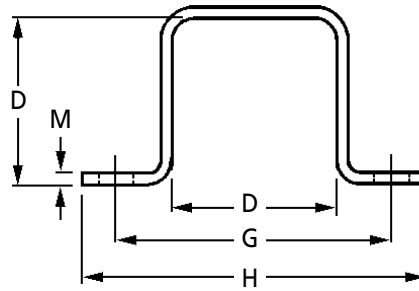
**BR
BK**

ANTI-VIBRATION & SPRINGS

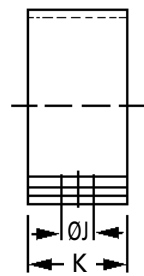
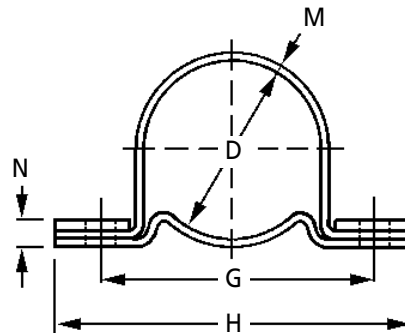
Rosta Rubber Suspension Units



BR Type



BK Type



Discounts: 6+ -5% 20+ -10% 40+ -20% 60+ -25%

Part Number	D	G	H	ØJ	K	M	N	Weight kg	Price Each 1 - 5
BR TYPE CLAMP									
11BR	20	37	50	6.0	20	2.0	-	0.03	£6.14
15BR	27	50	65	7.0	25	2.0	-	0.04	£6.45
18BR	32	60	80	9.0	30	2.5	-	0.08	£7.82
27BR	45	80	105	11.0	35	3.0	-	0.15	£9.12
38BR	60	100	125	13.0	40	4.0	-	0.27	£12.96
45BR	72	115	145	13.0	45	5.0	-	0.45	£15.87
50BR	78	130	170	18.0	50	6.0	-	0.66	£22.18
BK TYPE CLAMP									
11BK	28	45	60	6.5	20	1.5	6	0.04	£13.32
15BK	36	55	75	6.5	25	2.0	7	0.09	£14.92
18BK	45	68	90	8.5	30	2.0	8	0.14	£15.87
27BK	62	92	125	10.5	35	2.5	10	0.29	£20.12
38BK	80	115	150	12.5	40	3.0	11	0.45	£26.29
45BK	95	130	165	12.5	45	3.5	13	0.68	£33.11
50BK	108	152	195	16.5	50	4.0	15	0.93	£51.64

Material

Steel

Other Info

We do not recommend to weld any adaption parts on ROSTA rubber suspension units.

For the fixation of the respective outer housing or inner square profile we offer standardised clamps.

The clamps are supplied separately without any bolts.

They are standardised and therefore fit exactly for the fixation and positioning of units (clamp type **BR** for type **DRS** and **DRA** & clamp type **BK** for types **DKA** and **DKS**) without any welding.

For longer units two or more clamps are recommended. The brackets are paint-finished.

+44 (0)1246 455500
+44 (0)1246 455522

ondrives

sales@ondrives.com
www.ondrives.com

Product information updated 1st April 2011 and subject to change. Please contact Sales for the latest prices and availability.