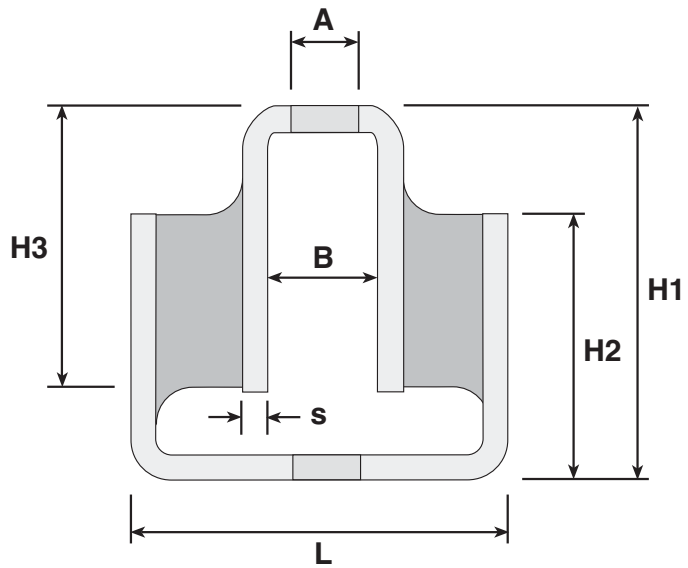
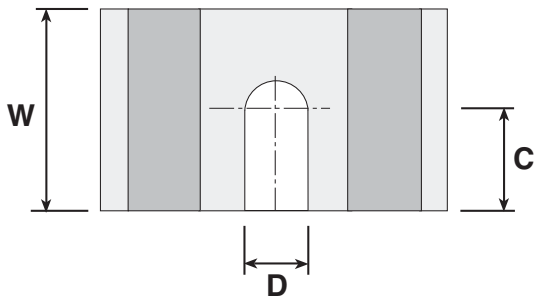
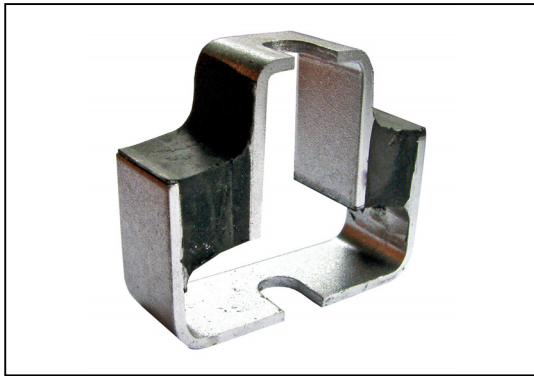


**RU**

# ANTI-VIBRATION & SPRINGS

## Anti-Vibration Mounts

Shock and Vibration Isolators



Part Number	Rubber Load Sh.A	Max. Load N	Deflection at Max. Load mm	Vertical Spring Rate N/mm
RU-6145	45	120	6.1	20
RU-6160	60	150	5.6	27
RU-6170	70	160	4.3	37
RU-7145	45	220	7.0	31
RU-7160	60	300	5.2	60
RU-7170	70	300	3.3	95
RU-7945	45	550	7.0	120
RU-7960	60	850	4.2	205
RU-7970	70	980	3.0	325
RU-8745	45	2000	7.0	285
RU-8760	60	2000	3.5	570
RU-8770	70	2000	2.8	715

The information given above is based on a 'compressive' vertical load.

Part Number	L	W	H1	H2	H3	A	B	C	D	Price Each
RU-6145	61	20	43	27	25	6.6	20.4	10.0	Hole	£P.O.A
RU-6160	61	20	43	27	25	6.6	20.4	10.0	Hole	£P.O.A
RU-6170	61	20	43	27	25	6.6	20.4	10.0	Hole	£P.O.A
RU-7145	71	25	62	43	38	11.0	25.0	12.5	Slot	£P.O.A
RU-7160	71	25	62	43	38	11.0	26.4	12.5	Slot	£P.O.A
RU-7170	71	25	62	43	38	11.0	26.4	12.5	Slot	£P.O.A
RU-7945	79	50	78	56	50	13.6	30.0	25.0	Slot	£P.O.A
RU-7960	79	50	78	56	50	13.6	32.4	25.0	Slot	£P.O.A
RU-7970	79	50	78	56	50	13.6	32.4	25.0	Slot	£P.O.A
RU-8745	86	64	108	82	76	16.0	38.0	32.5	Slot	£P.O.A
RU-8760	86	64	108	82	76	16.0	38.0	32.5	Slot	£P.O.A
RU-8770	86	64	108	82	76	16.0	38.0	32.5	Slot	£P.O.A

### Material

Metal parts are bright zinc plated mild steel.

### Options

Stainless steel parts are available on request. Ask sales for further details.

### Other Info.

RU Mounts are intended to protect sensitive machinery from shock and vibration.

They are used in a variety of applications in the machine building and general engineering sectors.

Due to their design, they allow relative loadings and movement in three directions, thereby reducing forces and tensions.

+44 (0)1246 455500  
+44 (0)1246 455522

**ondrives**

sales@ondrives.com  
www.ondrives.com

Product information updated 1st April 2011 and subject to change. Please contact Sales for the latest prices and availability.