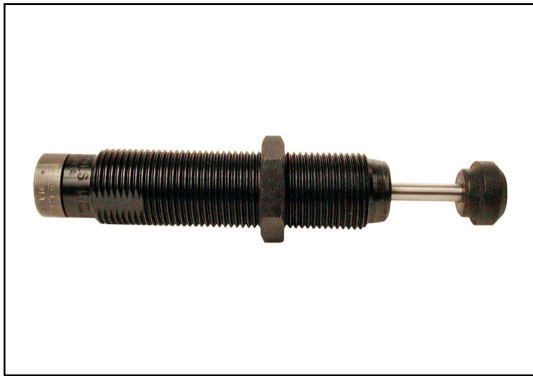


ANTI-VIBRATION & SPRINGS

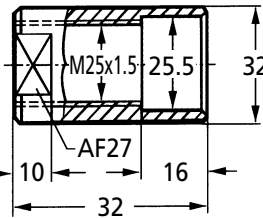
MA900

Linear Decelerators

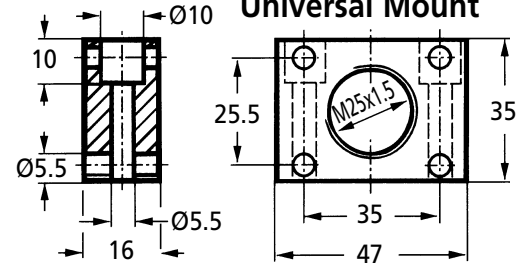
Adjustable



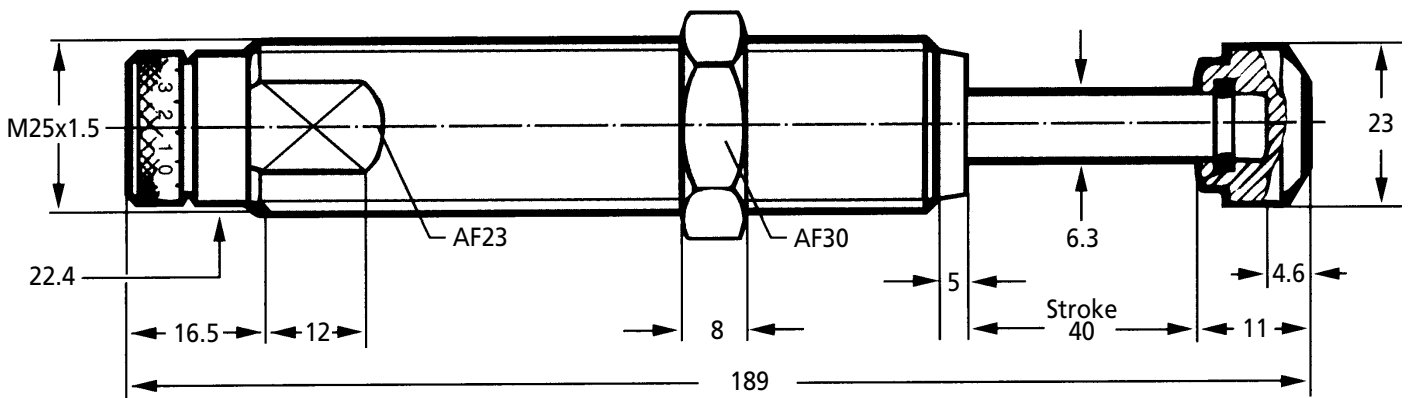
Stop Collar



Universal Mount



Standard Unit
Includes 1 Locknut & button



Capacity Chart

Part Number	Effective Weight min. kg max	Max. Energy per cycle W3	Capacity Nm per hour W4	Return Force N	Rod Reset Time Sec	Max. Side Load Angle†	Weight kg
MA900-M	14.0 - 2040	100	90000	10 - 35	0.4	1°	0.40

Standard Unit

Discounts: 6+ -10% 10+ -20%

Part Number	Thread	Price Each 1 - 5	Locknut 250-0040	*Stop Collar 250-0276	Mounting Block 250-0382	Universal Mount 250-0044	Rear Clevis 250-MARC	Front Clevis 250-MAFC
MA900-M	M25 x 1.5	£240.41	£4.42	£24.18	£60.22	£35.21	£P.O.A	£P.O.A

Material

Body: Steel with black oxide finish
Piston Rod: Stainless Steel or Chrome Plated

Performance

Operating Temperature Range: -12°C to +90°C
† Maximum side load depends upon application.

Options

- * Stop collar available but not required when used with built in mechanical stop.
- Available without rod end button on request. Contact sales for details.
- Available with clevis mounting. Contact sales for details.

Features

- Integral mechanical stop
- Self-contained
- Units may be mounted in any position.

Other Info.

Important: Install mechanical stop approx. 0.5 to 1mm before end of absorber stroke.

Adjustment: After installation of the decelerator in the machine, slacken the locking grub screw in the end cap and rotate between the 0 and 9 scale on the bezel (initial hard impact towards 9, and hard impact at end of stroke towards 0). Optimise stroke action and finally retighten locking screw.