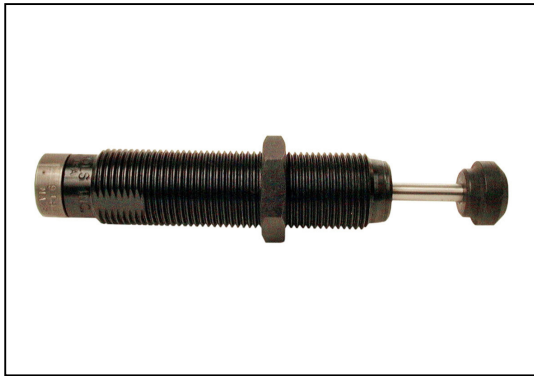
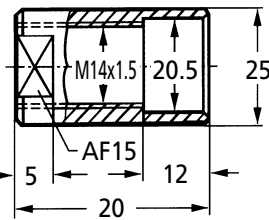
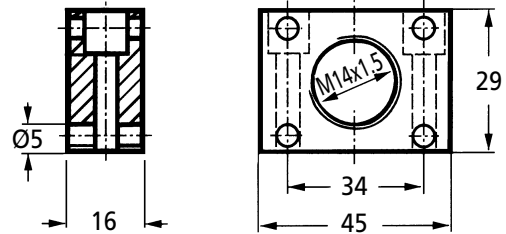
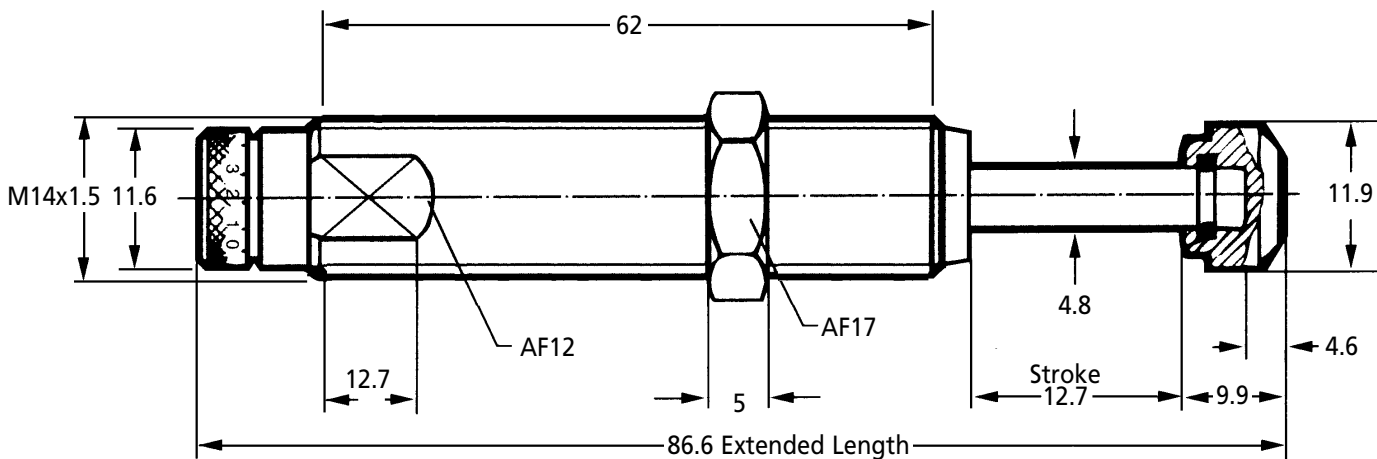


**MA150**

# ANTI-VIBRATION & SPRINGS

## Linear Decelerators

Adjustable

**Stop Collar****Universal Mount****Standard Unit**  
Includes 1 Locknut & button

### Capacity Chart

Part Number	Effective Weight me min. kg max	Max. Energy per cycle W3	Capacity Nm per hour W4	Return Force N	Rod Reset Time Sec	Max. Side Load Angle <sup>†</sup>	Weight kg
MA150-M	0.9 - 91	17	34000	3 - 5	0.4	5°	0.05

### Standard Unit

Part Number	Thread	Price Each 1 - 5
MA150-M	M14 x 1.5	£103.12

### Accessories

Locknut 250-0233	Mounting Block 250-0380	Stop Collar 250-0410*	Universal Mount 250-0353	Rear & Rear Clevis
£2.73	£55.13	£16.94	£31.81	N/A

**Discounts:** 6+ -10% 10+ -20%

### Material

Body: Steel with black oxide finish

Piston Rod: Stainless Steel

### Performance

Operating Temperature Range: -0°C to +66°C

Velocity Range: 0.15 to 3.66m/sec

<sup>†</sup> Maximum side load depends upon application.

### Options

\* Stop collar available but not required when used with built in mechanical stop.

### Other Info.

Mechanical stop must be provided 1.6mm before end of stroke.

Install mechanical stop approx. 0.5 to 1mm before end of absorber stroke.

After installation of the decelerator in the machine, slacken the locking grub screw in the end cap and rotate between the 0 and 9 scale on the bezel (initial hard impact towards 9, and hard impact at end of stroke towards 0). Optimise stroke action and finally retighten locking screw.

### Features

- Self-contained
- Units may be mounted in any position.

+44 (0)1246 455500

+44 (0)1246 455522

**ondrives**

sales@ondrives.com

www.ondrives.com

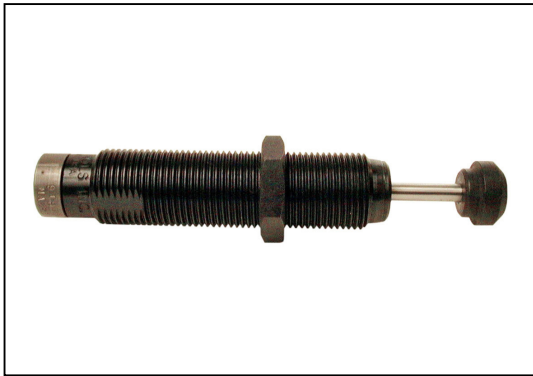
Product information updated 1st April 2011 and subject to change. Please contact Sales for the latest prices and availability.

# ANTI-VIBRATION & SPRINGS

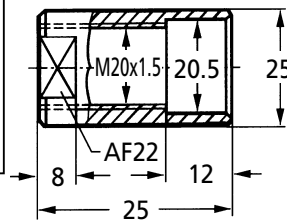
MA225

## Linear Decelerators

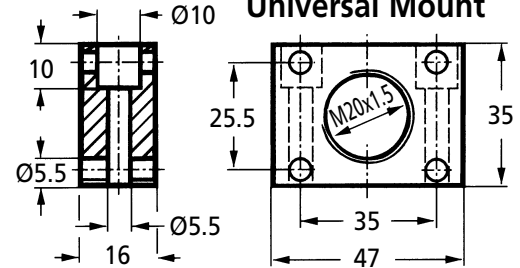
Adjustable



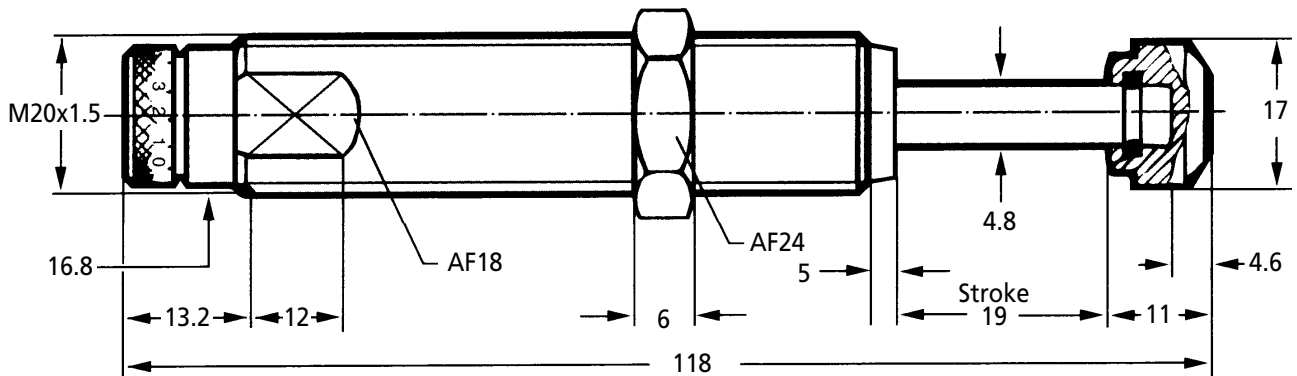
Stop Collar



Universal Mount



Standard Unit  
Includes 1 Locknut & button



### Capacity Chart

Part Number	Effective Weight me min. kg max	Max. Energy Capacity Nm per cycle W3	Capacity Nm per hour W4	Return Force N	Rod Reset Time Sec	Max. Side Load Angle <sup>1</sup>	Weight kg
MA225-M	2.3 - 226	25	45000	5 - 10	0.1	2°	0.13

### Standard Unit

Part Number	Thread	Price Each 1 - 5
MA225-M	M20 x 1.5	£111.73

### Accessories

Locknut 250-0207	Mounting Block 250-0380	Stop Collar 250-0410*	Universal Mount 250-0353	Front & Rear Clevis
£6.81	£55.13	£16.94	£31.81	N/A

Discounts: 6+ -10% 10+ -20%

### Material

Body: Steel with black oxide finish  
Piston Rod: Stainless Steel or Chrome Plated

### Performance

Operating Temperature Range: -12°C to +90°C

### Options

Supplied with Integral mechanical stop. Stop collar can be installed if desired.

### Other Info.

Install mechanical stop approx. 0.5 to 1mm before end of absorber stroke. After installation of the decelerator in the machine, slacken the locking grub screw in the end cap and rotate between the 0 and 9 scale on the bezel (initial hard impact towards 9, and hard impact at end of stroke towards 0). Optimise stroke action and finally retighten locking screw.

### Features

- Self-contained
- Units may be mounted in any position.

+44 (0)1246 455500  
+44 (0)1246 455522

**ondrives**

sales@ondrives.com  
www.ondrives.com

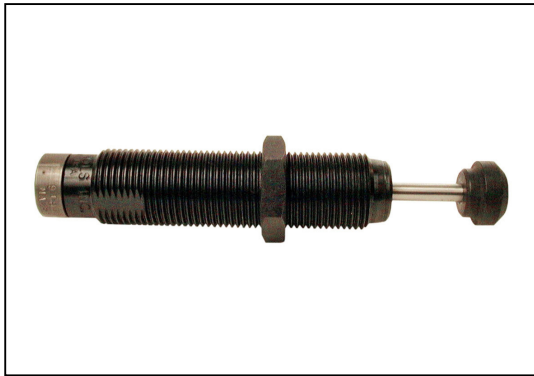
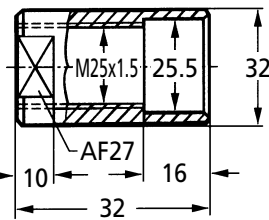
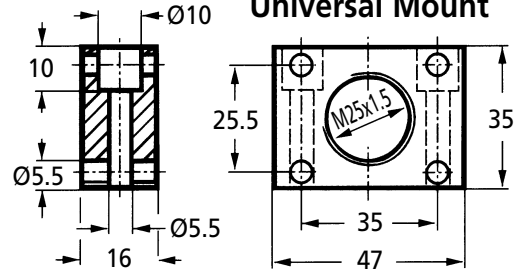
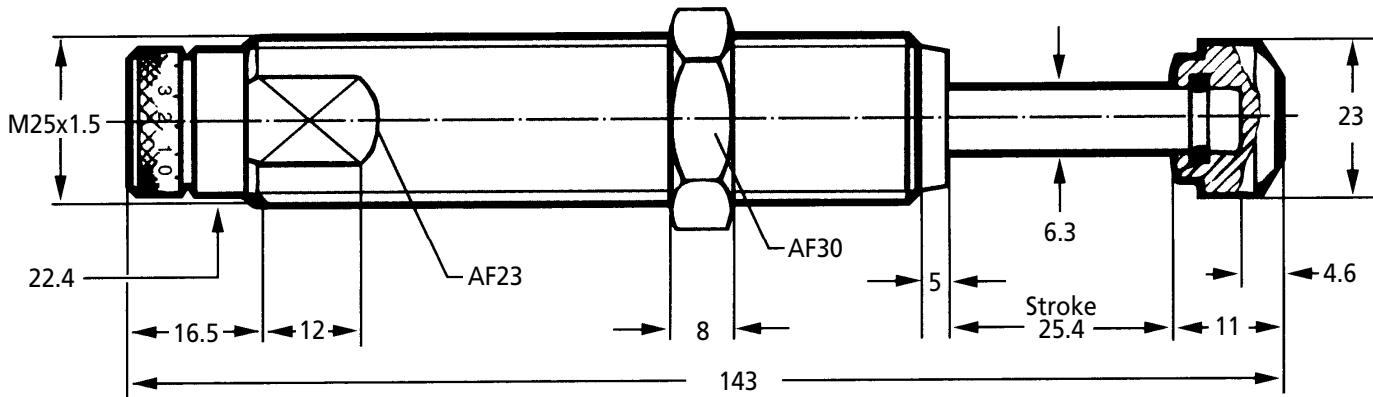
Product information updated 1st April 2011 and subject to change. Please contact Sales for the latest prices and availability.

**MA600**

# ANTI-VIBRATION & SPRINGS

## Linear Decelerators

Adjustable

**Stop Collar****Universal Mount****Standard Unit**  
Includes 1 Locknut & button

### Capacity Chart

Part Number	Effective Weight me min. kg max	Max. Energy per cycle W3	Capacity Nm per hour W4	Return Force N	Rod Reset Time Sec	Max. Side Load Angle <sup>†</sup>	Weight kg
MA600-M	9.0 - 1360	68	68000	10 - 30	0.2	2°	0.31

### Standard Unit

**Discounts: 6+ -10% 10+ -20%**

Part Number	Thread	Price Each 1 - 5	Locknut 250-0040	*Stop Collar 250-0276	Mounting Block 250-0382	Universal Mount 250-0044	Rear Clevis 250-MARC	Front Clevis 250-MAFC
MA600-M	M25 x 1.5	£162.47	£4.42	£24.18	£60.22	£35.21	£P.O.A	£P.O.A

### Material

**Body:** Steel with black oxide finish  
**Piston Rod:** Stainless Steel

### Performance

**Operating Temperature Range:** -12°C to +90°C  
<sup>†</sup> Maximum side load depends upon application.

### Options

- \* Stop collar available but not required when used with built in mechanical stop.
- M27 x 3 also available to special order.
- Available without rod end button on request. Contact sales for details.
- Available with clevis mounting. Contact sales for details.

### Features

- Integral mechanical stop
- Self-contained
- Units may be mounted in any position.

### Other Info.

**Important:** Check effective weight of application falls within range of unit.  
**Adjustment:** After installation of the decelerator in the machine, slacken the locking grub screw in the end cap and rotate between the 0 and 9 scale on the bezel (initial hard impact towards 9, and hard impact at end of stroke towards 0). Optimise stroke action and finally retighten locking screw.

+44 (0)1246 455500  
+44 (0)1246 455522

**ondrives**

sales@ondrives.com  
www.ondrives.com

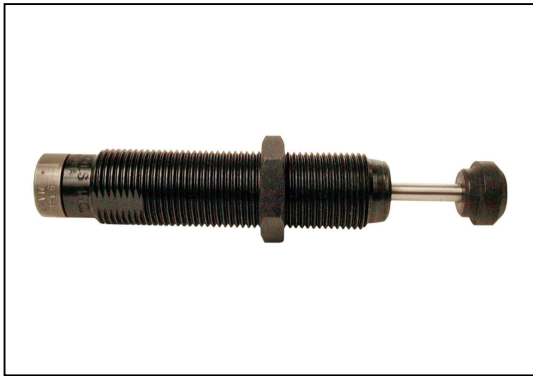
Product information updated 1st April 2011 and subject to change. Please contact Sales for the latest prices and availability.

# ANTI-VIBRATION & SPRINGS

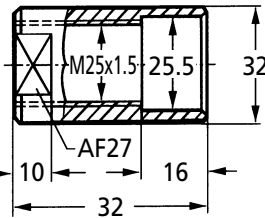
**MA900**

## Linear Decelerators

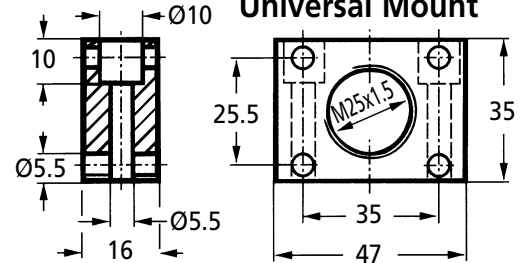
Adjustable



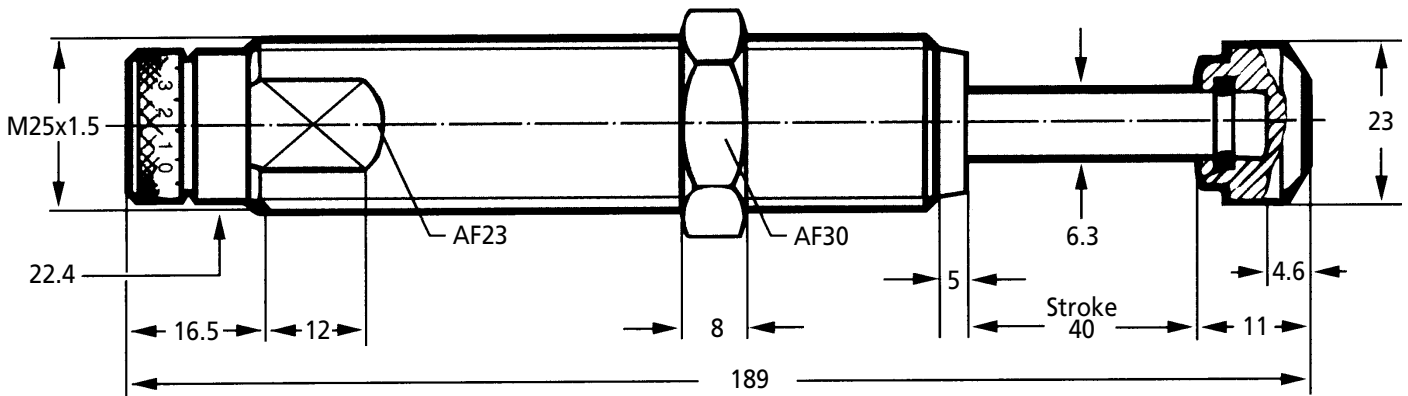
**Stop Collar**



**Universal Mount**



**Standard Unit**  
Includes 1 Locknut & button



### Capacity Chart

Part Number	Effective Weight min. kg max	Max. Energy per cycle W3	Capacity Nm per hour W4	Return Force N	Rod Reset Time Sec	Max. Side Load Angle†	Weight kg
MA900-M	14.0 - 2040	100	90000	10 - 35	0.4	1°	0.40

### Standard Unit

**Discounts: 6+ -10% 10+ -20%**

Part Number	Thread	Price Each 1 - 5	Locknut 250-0040	*Stop Collar 250-0276	Mounting Block 250-0382	Universal Mount 250-0044	Rear Clevis 250-MARC	Front Clevis 250-MAFC
MA900-M	M25 x 1.5	£240.41	£4.42	£24.18	£60.22	£35.21	£P.O.A	£P.O.A

### Material

**Body:** Steel with black oxide finish  
**Piston Rod:** Stainless Steel or Chrome Plated

### Performance

**Operating Temperature Range:** -12°C to +90°C  
† Maximum side load depends upon application.

### Options

- \* Stop collar available but not required when used with built in mechanical stop.
- Available without rod end button on request. Contact sales for details.
- Available with clevis mounting. Contact sales for details.

### Features

- Integral mechanical stop
- Self-contained
- Units may be mounted in any position.

### Other Info.

**Important:** Install mechanical stop approx. 0.5 to 1mm before end of absorber stroke.

**Adjustment:** After installation of the decelerator in the machine, slacken the locking grub screw in the end cap and rotate between the 0 and 9 scale on the bezel (initial hard impact towards 9, and hard impact at end of stroke towards 0). Optimise stroke action and finally retighten locking screw.